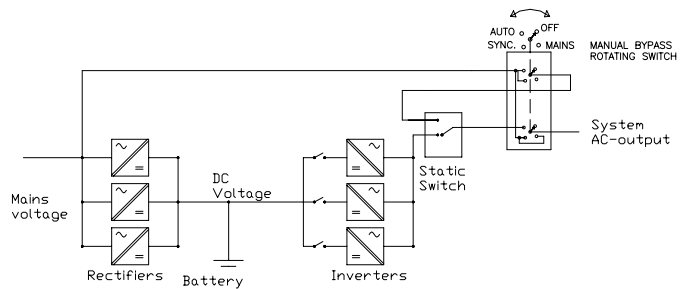
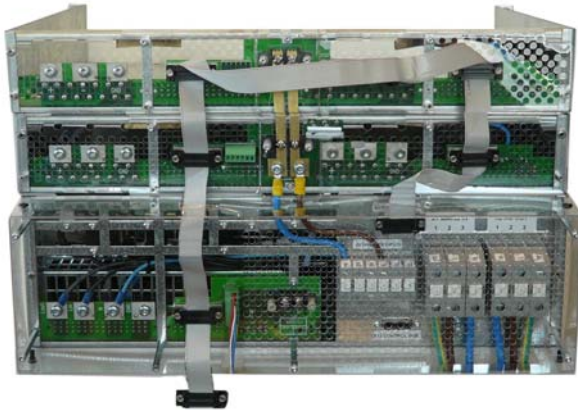


# BPU69000 DUAL 30kVA

*30kVA External Static Switch for DAC60000 Dual Inverters*



**Modular Inverter system 1 500VA ... 30 000VA  
 2 x 1500VA inverter modules in 19" 1.5U  
 Static Switch and Manual Bypass in 19" 3U  
 Redundant n+1 system, hot swap plug-in modules  
 Both On-line and Off-line applications**



| STATIC SWITCH (BYPASS) MODULES |                 |                 |               |                        |                                      |             |                            |        |
|--------------------------------|-----------------|-----------------|---------------|------------------------|--------------------------------------|-------------|----------------------------|--------|
| Type                           | Nominal Voltage | Frequency Range | Nominal Power | Max continuous Current | Max off-line short time peak current | Cooling     | Dimensions Without Handles | Weight |
| BPU69430FR                     | 230VAC          | 40-70Hz         | 30kVA         | 125A                   | 5000 A/10 ms, 400A/0,3 s, 200 A/1min | Forced, fan | 220x131x400 mm             | 8.4 kg |

| 19" 3U POWERFRAME (sub-rack) INCLUDING MANUAL BYPASS |  |
|--|--|
| Type   | Description  |
| MBP68400   | Sub-rack including manual bypass and position for static switch, 19" x 3U x 480mm, weight 11.6kg |

**Sales & R&D** Martinkyläntie 43, FI-01720 VANTAA, Tel. +358 10 2890 700 Fax +358 10 2890 793  
**Production and Service** Teollisuuskatu 3, FI-44150 ÄÄNEKOSKI, Tel. +358 10 2890 700 Fax +358 10 2890 790  
**E-mail** marketing@powernet.fi, service@powernet.fi **Internet** www.powernet.fi

**Features:**

- Small size, light weight, standard 19" rack
- On-line/off-line configurations, user changeable during operation
- Fast switching, user programmable reaction time for optimized system performance
- Large user programmable synchronization range
- Continuous microprocessor based internal monitoring and diagnostics
- Remote monitoring through RS-232 with standard PC

**User programmable parameters:**

- On-line/Off-line configuration
- Minimum and maximum inverter RMS voltage conformity
- Minimum and maximum mains RMS voltage conformity
- Minimum and maximum mains frequency conformity
- Maximum allowed mains frequency change rate
- Load level to return to inverter supply after overload
- Delay to switch to inverters at rapid mains blackout or over voltage (min. 1ms)
- Delay to switch to mains at rapid inverter blackout or over voltage (min. 1ms)

**SPECIFICATION**

**ELECTRICAL**

|   |  |
|---|--|
| Operation voltage range                     | 80 - 270 VAC                               |
| Synchronizing frequency range               | 40-70 Hz (user programmable)               |
| Protection, external fuse in mains AC input | MCB 125A B-, C- or D-curve or gG fuse 125A |
| Efficiency at full load                     | > 99 % @ 230VAC                            |
| Overloading capability (off-line)           | 5000 A/10 ms, 400 A/0,3 s, 200 A/1 min     |

**MECHANICAL**

|  |  |
|--|--|
| Enclosure                                | Steel casing IP20  |
| Connectors in bypass module's rear panel | Plug-in connectors   |
| Connectors in powerframe's rear panel    | Mains Input and AC output, 25mm <sup>2</sup> screw terminals (L-N-PE)<br>(up to 35 mm <sup>2</sup> with solid wires)<br>3 x Inverter AC input, 10mm <sup>2</sup> screw terminals (L-N) |

**ENVIRONMENTAL**

|                       |  |
|-----------------------|--|
| Operating temperature | 0...50 C full power, 50...60 C reduced power   |
| Cooling               | Forced cooling front to rear, 2 fans inside the module.<br>Fans are redundant, one fan is enough for cooling in normal |

conditions.

**STANDARDS**

|        |   |
|--------|---|
| Safety | EN 60950-1  |
| EMC    | EN 55022B, EN61000-6-3, EN61000-6-2 or EN61000-6-1<br>(EN61000-4-3 radiated immunity according to EN61000-6-1 other immunity standards EN61000-6-2) |

**ALARMS AND INDICATORS**

|                 |  |
|-----------------|--|
| LED indications | Overload – Fault - Mains failure - Mains in use - Inverter failure -<br>Inverter in use – Synchronized - Communication |
|-----------------|--|

|              |   |
|--------------|---|
| Relay alarms | Fault in system<br>Primary supply failure |
|--------------|---|

Remote monitoring through RS-232

**SYSTEM SOLUTIONS AND AC-DISTRIBUTION**



**Complete Inverter System**

Up to 18pcs of 1500VA inverters max 27kVA can be installed in parallel including external static switch and manual bypass. Static switch/manual bypass powerframe and inverters are installed on top of each others in 19" cabinet



**IEC320 Distribution solutions**

19" 1U distribution panels with IEC320 connectors offers safe and easily changeable distribution solution. Ampere meter also available for local load monitoring.

**Ordering information: See separate datasheets**